

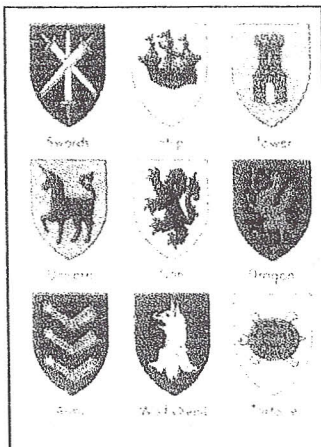
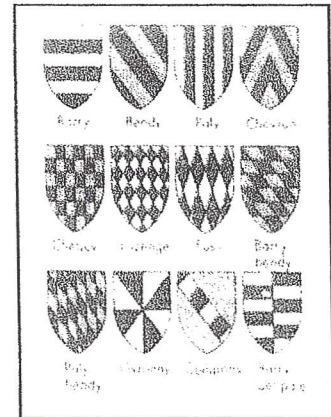
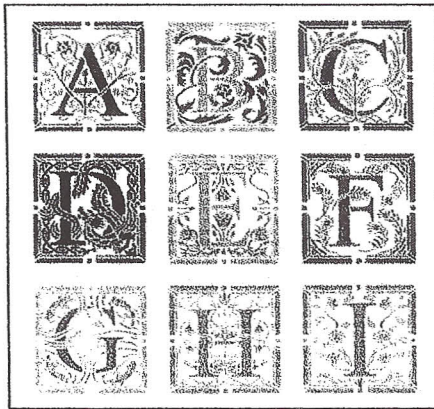
# Coat of Arms Directions

## Lesson Plan

**Review:** To complete this assignment you will need a pen, pencil, colored pencils, heraldry handout and some imagination. This assignment will be due with your final project for this unit. Remember this coat of arms (COA) is your identification on the battlefield as well as at court with the King or Queen. It should stand out as something powerful and worthy of deep respect by both your friends and your enemies. Your COA has been divided into four regions. Each region will be dedicated to a symbol that represents you as a Knight and Lord of the realm. Remember every symbol has deep meaning and you need to be able to clarify the meaning for each of your 4 quadrants.

### Directions:

1. Background: Choose a pattern that will distinguish you from all other people or you may create your own pattern.
2. Upper left: Draw your initials using illuminated letters.



3. Upper right: Create a charge. A charge is a symbol that represents who you are on the battlefield and in the King's court.
4. Bottom Center: Find or create your family motto. The motto is a saying represents your name and your family. You may create your own or you may use the one you found online.